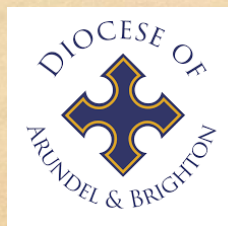




RSE Information Session



Wednesday 11th December 2024

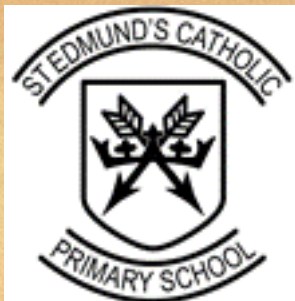


Relationships Education, Relationships and Sex Education (RSE) and Health Education

Statutory guidance for governing bodies,
proprietors, head teachers, principals, senior
leadership teams, teachers



Our session today is part of our
consultation process and to go
over our curriculum overview for
RSE



Objectives

- To share the changes to the requirements for RSE/RSHE which is now statutory and has been fully embedded as part of our curriculum from September 2021
- To work closely with you as we ensure that we are in partnership to support your children

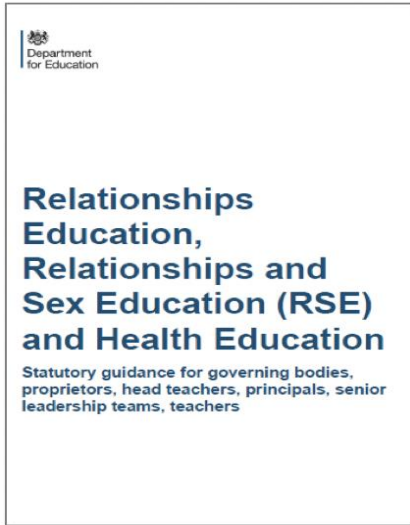
Parents

- Parents and carers are an important source of learning about relationships.
- We feel that parents should have a role as relationships educators.

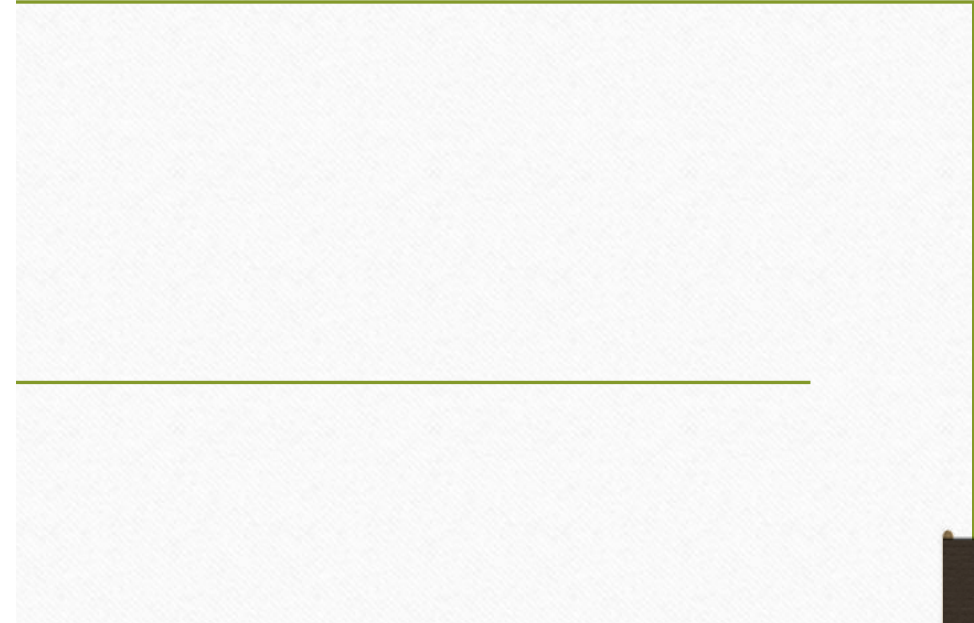
What is RSE?

- Relationship and Sex Education
 - Health education has now been added so RSHE is also used.
-
- RSE is the life long learning about physical, moral and emotional development.
 - It is the understanding of the importance of marriage for family life, stable and loving relationships, respect, love and care.
 - The key objective is to provide life long skills for the well-being and safety of every pupil. Teaching of mental health and well-being is now included in Health education.
 - First aid is also now included.
 - The teaching must reflect the law of the Equality Act 2010 and may reflect faith.

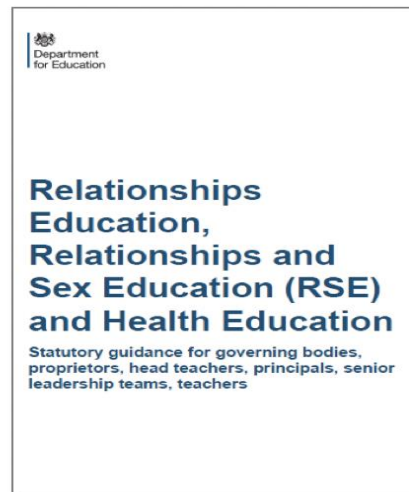
What are the expectations for Primary Health Education?



- Mental wellbeing
- Internet safety and harms
- Physical health and fitness
- Healthy eating
- Drugs, alcohol and tobacco
- Health and prevention
- Basic First Aid
- Changing adolescent body (Puberty)



What are the expectations for Primary Relationships Education?



- Families and people who care for me
- Caring friendships
- Respectful relationships
- Online relationships
- Being safe

RSE at St Edmund's



- RSE will naturally overlap with PSHE, RE & Science.
- In ALL schools teaching MUST reflect the law including the [Equality Act 2010](#).
- Schools with a religious character are able to teach their distinctive faith perspective on relationships.
- The religious backgrounds of all pupils will be taken into account when planning lessons.

Right to withdraw



- Parents/carers have the right to withdraw their children from **elements** of Sex Education that are not in line with the National Curriculum for Science.
- They may **not** withdraw their children from any elements of Relationships Education and Health Education.

Supporting all pupils



- We will ensure that RSE and Health Education is accessible for all pupils including those with Special Education Needs &/or Disability - SEND.

Supporting all pupils



- We will ensure that all pupils understand the importance of equality and respect and comply with the relevant provisions of the Equality Act 2010.
- We will work in partnership with the family, school and the Church.

Working with external agencies



- We will ensure any outside visitor is familiar with our school ethos and RSE Policy.
- We will ensure all visitor credentials are fully checked.
- We will always see materials and lesson plans in advance and ensure they are age-appropriate and accessible to all pupils.
- We will ensure that any delivery from an outside visitor will enhance our planned programme.

Statutory
Requirements by
the end of
Primary School for
**Relationships
Education**

COMPULSORY



All Pupils should know about:

- Families and people who care for me
- Caring friendships
- Respectful relationships
- Online relationships
- Being safe

Sex Education in Primary Schools



- The focus for all primary schools is Relationships Education
- Puberty is now included in Health Education(RSHE)

WORKING IN PARTNERSHIP

We will support you:

- In how to talk to your children about Relationships and Sex Education.
- By signposting you to age-appropriate resources that can be used at home.
- By offering links to what is being taught in school in other areas of the curriculum.

Early Years

Aim: To explore the wonder of being special and unique

LO: To **recognise** the joy of being a special person in my family

LO: To **recognise** that we are all different and unique

LO: To **celebrate** the joy of being a special person in God's family

[Home](#)

[Online Parent Portal – Enter](#)



Online Parent Portal

Relationship Education for Catholic primary schools



Welcome!

Access to this site is permitted to parents of pupils at **St Edmund's Catholic Primary School, GU7 1PF.**

[Read about licences here...](#)

[Click to Enter - Online Parent Portal \(Primary\)](#)

[Logout](#)



Years 1 and 2

Below you will find links to the units of **Life to the Full** which will be covered in Years 1 and 2. Your school will decide when each unit is delivered and they will communicate with parents about the stages of the programme that their children are undertaking. During these times, you can then look at these pages and, if you wish, engage in some of the Suggested Activities for home. Each unit also has an associated prayer which you can say with your children.

How it works

1. Your school will tell you when they are covering these Units with your children
2. Click on the images below to review the content
3. You may like to say the associated **Prayer** for the unit with your children
4. You may like to engage in one of the **Suggested Activities** for home. Please note that our Suggested Activities are currently in development and will increase over time.

Module One: Created to Love God

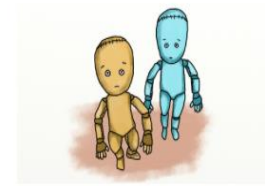
Created and Loved by God explores the individual. Rooted in the teaching that **we are made in the image and likeness of God**, it helps children to develop an understanding of the importance of valuing themselves as the basis for personal relationships.

Unit 1: Religious Understanding

Unit 2: Me, My Body, My Health

Unit 3: Emotional Well-Being

Unit 4: Life Cycles



Module Two: Created to Love Others

Created to Love Others explores the individual's relationship with others. Building on the understanding that we have been created out of love and for love, this module explores how we take this calling into our family, friendships and relationships, and teaches strategies for developing healthy relationships and keeping safe.

Unit 1: Religious Understanding

Unit 2: Personal Relationships

Unit 3: Keeping Safe



Key Stage One (Years 1 and 2)

Welcome!

Life to the Full is a brand new programme in Relationship Education for Catholic primary schools throughout the UK.

Lower Key Stage Two (Years 3 and 4)

Our Online Parent Portal contains:

- An overview of the programme, "Life to the Full"
- Guidance for parents on the content of lessons
- Activities that can be undertaken at home to support the delivery of the programme

Upper Key Stage Two (Years 5 and 6)

What is Life to the Full?

It's a programme in Relationships Education based on the Department of Education guidance which will become statutory from September 2020. This programme is rooted in a Christian understanding of the human person, based on "A Model Catholic RSE Curriculum" provided by the Catholic Education Service.

How to use this online portal?

The Online Parent Portal provides parents of children in schools who subscribe to **Life to the Full** with:

- Information about the programme children will be following;
- Access to resources;
- Suggestions for further activity at home.

To access it, follow the links to the year group your child is in. Your school will provide more details about what lessons your child will be learning and when,

Parent Portal

Online Parent Portal

As part of your subscription to "Life to the Full", all parents will be able to access the Online Parent Portal with the following login credentials:

Username

st-edmunds-gu7

Password

holiday-cottage

Parent Portal URL

www.tentenresources.co.uk/parent-portal

**We are
committed to**



- Building strong partnerships with our parents/carers.
- Parents/carers understanding what is being taught, when and how.
- Helping parents/carers to support their child's learning at home.
- Developing a shared set of values between school and parents/carers.
- Dispelling myths around the teaching of RSE and Health Education.

- Our school ethos believes that knowledge empowers and protects children.
- Correct terminology for body parts is introduced early to normalise this biological vocabulary and to support safeguarding.
- These words are not used in isolation but always in conjunction, ensuring children know these are private parts of their bodies.

- Sex education is **not** statutory at primary age.
- However, it is **recommended** that all primary schools should have a sex education programme tailored to the age, physical and emotional maturity of the pupils. (DFE, Page 23)
- This is also part of the science curriculum for Year 6 pupils at St Edmunds and is part of our curriculum delivery. Therefore, you **will not be able** to withdraw your children from this part of their education.
- *Parents of children in Year 5 and 6 will be send a reminder of the login details and overview of teaching outcomes*

How will we approach this as a Catholic School?

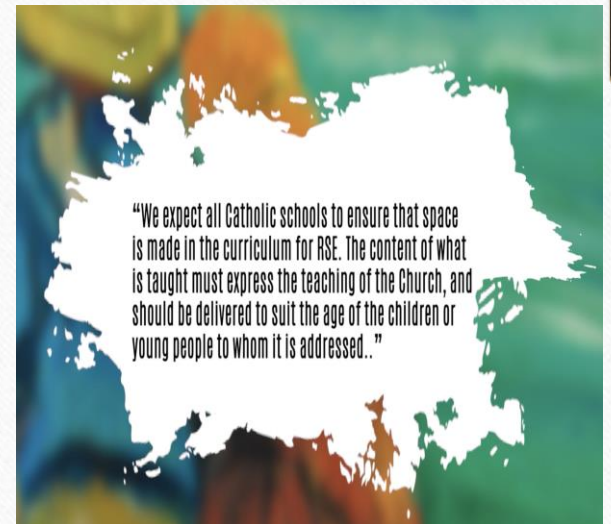
It's important to know that the DfE guidance includes the following:

All schools may teach about faith perspectives. In particular, schools with a religious character may teach the distinctive faith perspective on relationships

And to note that the Catholic Model Curricula are being used as examples of good practice.

Catholic education places the **formation of the individual** at the heart of the school's pastoral care.

RSHE however, is more than pastoral care; it's a curriculum subject.



LGBTQ+ Equality

What the DfE RSHE guidance says:

‘Schools are required to comply with relevant requirements of the Equality Act 2010. Further guidance is available for schools in The Equality Act 2010 and schools advice. Schools should pay particular attention to the Public sector equality duty (PSED) (s.149 of the Equality Act).’ - Para 27 page 13

‘Schools should be alive to issues such as everyday sexism, misogyny, homophobia and gender stereotypes and take positive action to build a culture where these are not tolerated, and any occurrences are identified and tackled.’ - Para 31 page 13

“In all schools, teaching should reflect the law (including the Equality Act 2010) as it applies to relationships, so that young people clearly understand what the law allows and does not allow, and the wider legal implications of decisions they may make.” (page 12 DfE Guidance)

LGBTQ+

- We will not be actively generating conversations about LGBTQ+.
- LGBTQ+ has actively been portrayed recently in the media along with race. Our children will have questions. It is important that we provide our children with a safe space to talk about these issues.

We will be promoting that God loves us all.

- In Catholic Schools, we teach RSE/RSHE because we believe that it is important for our children. The Catholic Church has a vision about human flourishing and how, with God's guidance and help, all people can live life to the full, in relationship with Him and with one another. This is the basis for Catholic RSHE.
- Like Jesus, the Church is always interested in the **well-being of each person and in every aspect of their lives**. Everyone is looking for meaning in their lives, for how to be happy and become a better person. In response, the Church offers guidance and wisdom from God, based on 2000 years of prayerful reflection.
- As St Paul says:

If I have understood all mysteries and all knowledge but have not love, I am nothing.

1 Corinthians 13:2-3

Our policies and website information

- <https://www.stedmundsschool.co.uk/page/?title=Policies&pid=43>
- <https://www.stedmundsschool.co.uk/attachments/download.asp?file=1745&type=pdf>



The central message of the Christian faith is love. The central message of our RSE teaching is love.



Please be assured that the programme used is approved by the Diocese and have been updated, includes new statutory guidance, the programme we use teaches that:

- The journey begins at the moment of our conception
God is at the heart of love
- Puberty can be an extremely confusing time for children, our message will be that *even in this confusion, God is there*
- The Sacrament of marriage publicly declares the commitment of each spouse to the other permanently *in the acknowledgement that it is God-given*



Thank you for attending our session



-
- These slides will be shared on our school website
 - Any questions, please send us an email to info@stedmunds.surrey.sch.uk

